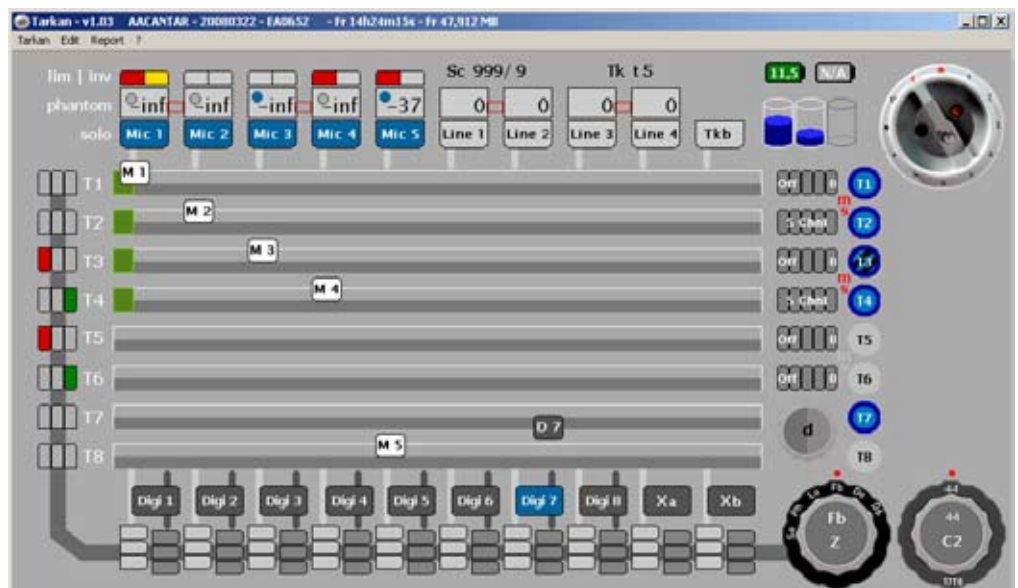


# Aaton audio Tarkan v1.11

## Cantar full remote

*For Cantar-X2 only*

Installed in a laptop or netbook, and connected to Cantar through Ethernet, Tarkan controls all of the Cantar's audio signals and in/out routings. It edits the metadata and generates PDF/CSV sound reports.



Tarkan works under OS-X 10.5 and Windows XP.

+33 4 7642 9550  
cantar@aaton.com

**AATON**

## Starting-up

**Cantar side:** Turn 'OFF' Cantar, plug a straight or cross-wired CAT-5 cable into the socket in the HDD housing. The cable must be held tightly by the canyon shaped clamp.

**Laptop side:** First eliminate any other TCP/IP activity (note2, next page). Connect the CAT-5 cable. Turn 'ON' Cantar. Launch the Tarkan application and **wait** from 10 sec (Mac OS-X) to 60 sec (Win-XP) to allow Tarkan to assign an IP address to each Cantar; then click the upper/left 'start' icon to activate the controls (soon a timer will do it for you).

## main screen

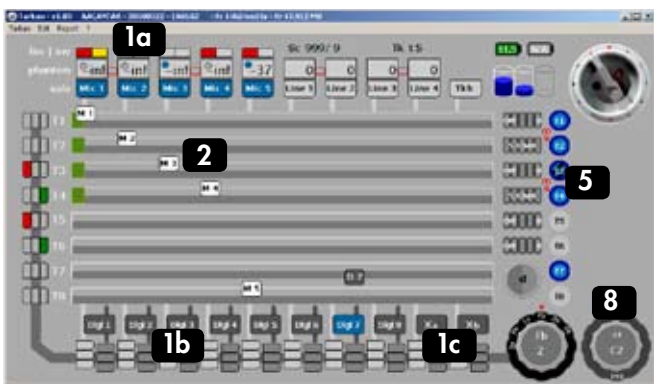
The screen is made of three layers: the first one displays the audio flow from the digi/mic/line inputs (with their settings), to the tracks (In-grids) and to the monitors (Out-Maps), the second layer handles the mixer with its faders (carrying the track-names) and panpots, the third layer displays the modu-  
lometers over the tracks.

## In-Grids

The analog inputs (1a) go down, the digital and mixer inputs (1b/1c) go up to the track cross points (2). To set the inputs for T1-T6, go to ROUTING In-Grids (8), click on the desired cross point, it turns blue; double click to deactivate.

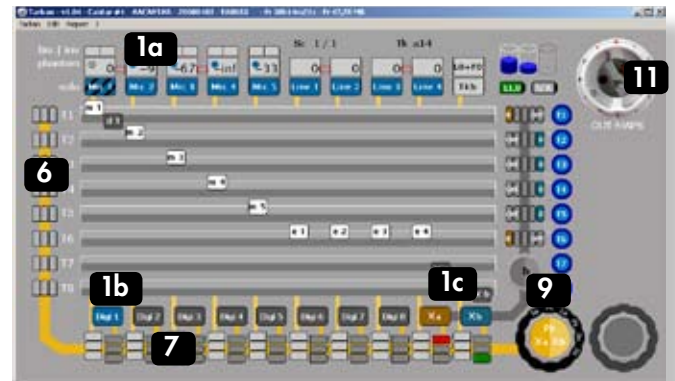
To set the inputs for T7-T8, first click the desired T7 cross point, it turns yellow as well as the other possible choice(s), click the other one: they both turn blue.

If you want to turn 'OFF' T7-T8, double click the cross point routed to T7. Armed tracks (5) are high-lighted in deep blue.



## Out-Maps

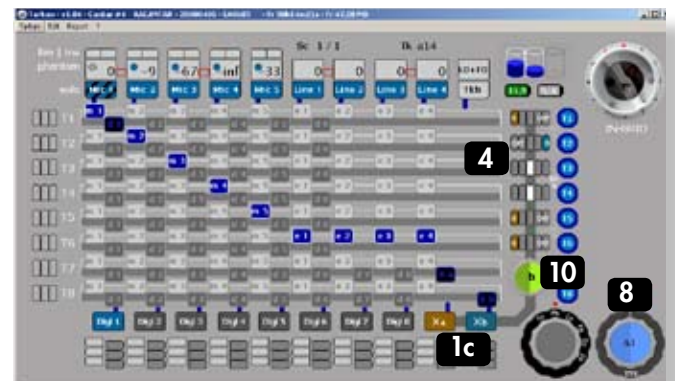
The tracks go to the 'left-Center-Right' track monitoring switches (6). Analog and digital inputs go directly to the "input monitoring" switches (7). Both (6) and (7) go to the monitoring crown (9).



## Mixer

The mixer's faders (3) and pan-pots (4) generate the mixdown input (1c); In PPR, TEST and ROUTING (In-Grids), twenty-six pan-pot configurations can be stored in Tarkan.

- During the creation of a pan-pot config, either on Cantar the usual way, or on Tarkan with successive clicks on the colored beans (100% left/right with [ctrl] [click]), the background of the pan-pot 'crown' (10) becomes **red**.



Once done, a [ctrl] [click] in the middle of the crown stores the config in Tarkan's memory and pushes it into Cantar where it becomes the active mixer pan-pot, as indicated by the crown background which turns **grey**.

- Labeled from a to z, all the pan-pot configurations are stored in Tarkan memory where they are displayed against a **green** background. Browse them by clicking the left or right half-moon. A [ctrl] [click] in the middle of the crown pushes the selected config into Cantar: becoming 'active', it turns from green to grey.

## Remote

To get access to all of Cantar's functions, physically set the [MainSelector] to PPR, then click on the desired position of the VirtualSelector (yellow circle turns red) (11).

## Rec&Play

The VirtualSelector turns blue when a Rec&Play 'BLUE' function is called by pressing the keyboard or Cantar [shift] button. The panel (12) is used to select and activate the play-cards.

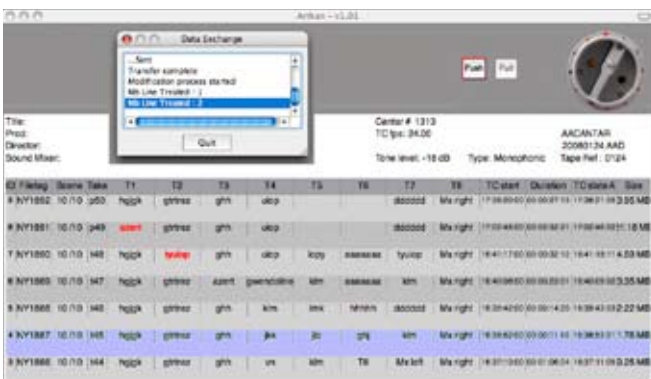


## metadata screen

For paradigm consistency, metadata are presented in the same lay-out as the Cantar Sound-Report ((except that the most recent takes are on top of the page).



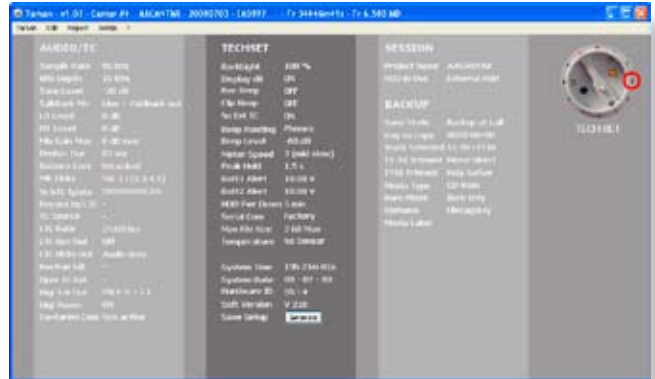
They are either immediately written in the open audio files (REC: black characters on yellow background, PPR: orange background), or stored in a buffer memory if the files are closed or inaccessible (red characters on grey background), waiting to be 'pushed' to the connected Cantar in physical or virtual BROWSE positions.



Access to the 'Metadata' screens is allowed on the positions where the MainSelector bottom becomes dark grey; double click on the selector itself.

## operands screen

This screen displays the AUDIO/TC, TECHSET, SESSION and BACKUP parameters. TECHSET 'Save Setup' stores the saved parameters in the Cantar memory.



**note1:** Download TAW1xx (Win-XP) or TAM1xx (Mac OS-X 10.4.11+) from the Aaton software site. Tarkan's display requires a minimum of 1024\*600 pixels, this fits netbooks such as the Asus Eee-902.

**note2:** To insure smooth communications with Cantar:

- Disable the firewall. Consult your Mac manual since the procedure is different for OS-X 10.4 (Tiger) and 10.5 (Leopard). Either 'allow all connections' or 'allow specific' i.e. Tarkan.
- Make sure that no TCP/IP activity is occurring: turn 'OFF' the Bluetooth and WiFi transmitters. You could use the WiFi link only if Cantar is connected to a WiFi access-point, e.g. Apple, Belkin, D-link, Linksys, Netgear, etc.
- Quit Skype and all widgets which are continuously scanning the internet.

**note3:** A PDF/CSV sound-report builder is implemented in v1.10. Generating the PDF then mailing it from Tarkan saves time at wrap up.