

Aaton Arcan-w v2.14



- sets input and output routings
- displays modulometers and fader gains
- edits scenes, takes, notes and track names
- remotely controls Cantar REC

Installation

Hardware The Win-Mobile 5PDA must feature a VGA screen (640x480), not a QVGA screen (320x240), and an MS Bluetooth stack, not a Broadcom stack, e.g. Qtech 9000, iMATE Jasjar, DELL Axim-51v, HTC X7500, T-Mobile Ameo.

Software Download 'rcan-21n.cab' from the Aaton web site in a PC or Mac then copy it through USB into a folder of the PDA, e.g. MyDocuments. Open MyDocuments and execute 'rcan-21n.cab'.

Connection to Cantar

Cantar side

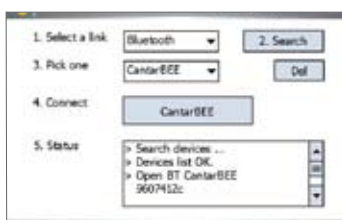
Set TECH.14, 'Serial com' to 'PDA'. The 3 meter range transmitter is low power (idle: 0.1mA, connecting: 4mA) and may remain active at all times.

PDA side

Click Arcan's icon in the PDA 'programs' screen.

1 Select a Link Bluetooth.

2 Search Found Bluetooth devices are shown in the Pick one pulldown. Click the ID for the Cantar you want to store in the PDA memory.



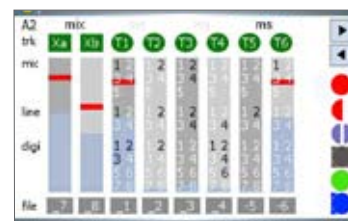
3 Pick one The list of Cantar IDs in memory is shown. Click the desired one.

4 Connect The latest Cantar ID will show at next connection.

5 Status For maintenance engineers.

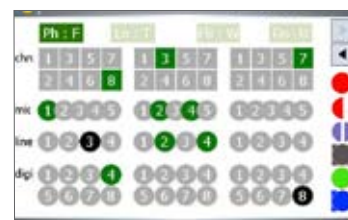
Operating Screens

In the {BROWSE}, {STOP}, {TEST}, {PPR} and {REC} positions, Arcan toggles between conversational screens. They display modulometers, ins and outs routings, and allow the editing of scene, take, track-names and comments.



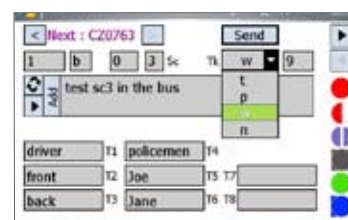
1 Inputs routes

Armed tracks;
M/S status;
Modulometers.
Inputs routings can only be modified in {STOP} position.



2 Outputs maps

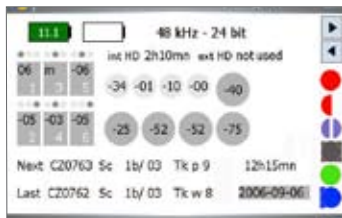
Recorded signals show in green, the non-recorded, sent directly to outputs, show in black. Outputs mapping can be modified in {STOP} position.



3 File metadata

Scene, take, notes and track-names with auto completion (see note1), and memorized text insertion, can be edited in {REC} {PPR} and {BROWSE}.

Arcan screens

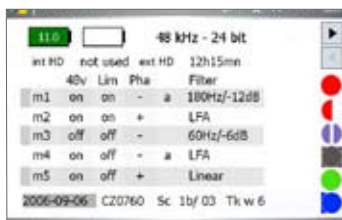


4 Overview

top: battery voltage, sample rate and bit depth, internal/external disk recording time.

middle: phantom, limiter, phase, high-pass filter in {STOP} position. Prefader/mixer gains in {TEST} {PPR} {REC} positions.

bottom: filetags, scene, take, day and time.



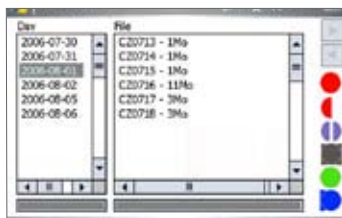
5 Mic settings

They are not yet modifiable from Arcan.



6 File listening

The sliding marker shows the location of the audio being played between two 'elapsed time' stops set by arrows and jog.



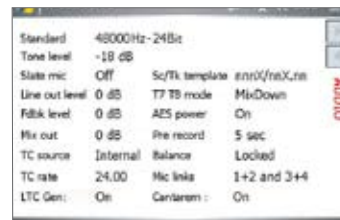
7 File editing

The Project is sorted by working days in the {BROWSE} screen.

Select a day then browse the files; the size of the first track of the take is displayed. Select a file to edit the scene, take, comments, file-names, etc. ([tab] to go from field to field).

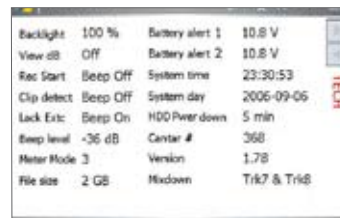
Auto completion guide A word is validated by [space]; go to another box; 'send' to Cantar; go to another page. If a correlation is found between the beginning of a word and the library, all stored word are shown. Hit a word in the list or select it with arrows, then 'enter'. To eliminate an obsolete word from the library, make it show on the list, select it with up/down keys and press "Suppr"; keyboard [Fn*Del]; virtual keyboard [CAP] then [Del]. To make the full database show, click with the pen and maintain pressure.

Operand Screens

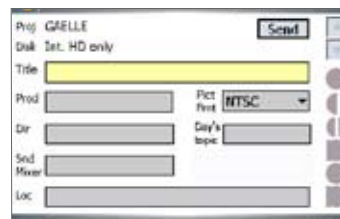


AUDIO/LTC

All sound and LTC settings are visible at a glance. They are not yet modifiable from Arcan.

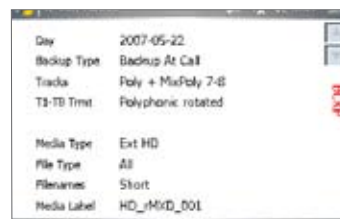


TECH



SESSION (Snd-Rep)

Arcan is a great helper to enter and modify the Sound report headers. Several entries per day are allowed, a new ALE a,d PDF page is opened on each new header item.



BACKUP

Note: [MainSelector] in {PPR} position, you can toggle between BROWSE, STOP, TEST, PPR and REC from the Arcan screen.



Quiz: vertical or horizontal bargraphs, what is your preference? Note that the horizontal version is not available.